



# Capital Facilities Plan Update

March 15, 2022 Board Report  
Liz Jamieson, Capital Projects Director

# CAPITAL FACILITIES PLAN UPDATE

MARCH 15, 2022

Focus areas for next steps:

- Further evaluation of building capacity, changes in classroom use, special program spaces.
- Evaluation of land for suitable uses.
- Integrate Kendrick data into report.
- Determine what facilities, if any, are needed and describe planned improvements and financing.
- Integrate into report.

# Questions?



Stanwood-Camano School District #401

# Capital Facilities Plan

2022-2028

DRAFT

DRAFT

*“One Community Dedicated to the  
Success of Every Student”*

**Stanwood-Camano School District  
#401**

**BOARD OF DIRECTORS**

**Albert Schreiber**

District 1

**Charlotte Murry**

District 2

**Miranda Evans**

District 3

**Ken Christoferson**

District 4

**Natalie Hagglund**

District 5

**SUPERINTENDENT**

**Dr. Deborah Rumbaugh**

DRAFT

DRAFT

DRAFT

DRAFT

# TABLE OF CONTENTS

**Introduction**..... 3

    Report Goals ..... 5

    Report Process ..... 5

**District Facts** ..... 7

    Overview ..... 9

    Students ..... 11

**Programs and Standards** ..... 13

    Strategic Planning ..... 15

    Programs ..... 15

    Educational Program Standards ..... 16

**Facilities Inventory**..... 19

    Elementary Schools ..... 21

    Middle Schools ..... 26

    High School and Alternative Program Facilities ..... 28

    Support Facilities ..... 31

    Land ..... 32

**Student Enrollment Trends and Projections** ..... 35

    Kendrick pages start here ..... 37

**Capital Facilities Plan** ..... 41

    Facility Needs ..... 43

    Planned Improvements ..... 43

    Costs ..... 43

    Financing ..... 45

**Summary** ..... 47

**Appendices** ..... 51

DRAFT

DRAFT



DRAFT

DRAFT

DRAFT

# *Introduction*

DRAFT

DRAFT

DRAFT

## **Report Goals**

The areas served by the Stanwood-Camano School District, including the City of Stanwood; the communities of Warm Beach, Cedarhome, Florence and Norman; and Camano Island, have seen steady population growth and a boom of single family residential construction in the past eight years. All of this new housing brings families and students to our district. The Snohomish County 2020 Growth Report shows that between the years 2000 and 2020 the population of the City of Stanwood grew by over 50%. It is the intent of this report to examine future district facility needs through 2028 and to serve as a framework for larger conversations around future capital project planning. Facility planning is an essential part of assuring our district remains in the forefront of providing excellent learning environments and opportunities for all students.

## **Report Process**

The report follows a format similar to previous Capital Facilities reports in order to enable data comparison between documents, and can be transferable to the format required by Snohomish County for use in their 2024 Comprehensive Plan Update. However, it is not an exact replica, as this report is intended to cover areas of importance not included in our previous Capital Facilities Plan that was generated for submission to Snohomish and Island Counties. This information will provide useful background when discussing the district's future needs and goals. Sections relating to population growth and density projections and their effect on school enrollments are provided by Educational Data Solutions, LLC. Existing facility information is gathered from record drawings, reports from the Office of the Superintendent of Public Instruction, and through on-site observation of each facility.

DRAFT

DRAFT

DRAFT

# *District Facts*

DRAFT

DRAFT

DRAFT



## Overview

Stanwood-Camano School District currently serves approximately 4,500 students from pre-kindergarten through grade 12, with additional support for students aged 18-22 who are no longer eligible to attend high school programs. The district employs close to 700 people. Students in the Stanwood-Camano School District are able to utilize a variety of resources for learning with a variety of program options and enrichment opportunities. We offer traditional K-12 in-person teaching, on-line courses, home school support, and alternative in-person programs. Our enrichment programs include music, art, athletics, and career preparation classes. The district has:

- Five Elementary Schools, grades K-5
- Two Middle Schools, grades 6-8
- One Alternative Middle School, grades 7-8
- One High School, grades 9-12
- One Alternative High School, grades 9-12
- Online courses for grades 9-12
- Parent Partnership for supporting parents as the primary teachers of their students
- Developmental Pre-School for ages 3+



Geographically, the Stanwood-Camano School District serves the Camano Island portion of Island County and the northwest portion of Snohomish County, bordering on the Skagit County line to the north and sharing boundaries with Arlington, Lakewood, and Marysville School Districts to the south and east. The City of Stanwood population for 2020 was 7,125 people. Up from 6,231 in 2010, which was more than double the population of 3,923 residents in 2000<sup>1</sup>.

<sup>1</sup>Snohomish County Tomorrow 2020 Growth Monitoring Report

DRAFT



DRAFT



## Students

The Washington State Office of the Superintendent of Public Instruction data shows that for the 2020-21 school year the district had 4,647 students enrolled. The district remains predominately White at 79.0%<sup>1</sup> of the student population, slightly higher than Snohomish County, which is 75.4% White<sup>2</sup> and lower than Island County, which is 85.2% White<sup>3</sup>, and, more specifically, Camano Island at 96% White<sup>4</sup>.

Historically, the number of students eligible for free and reduced lunch has been 30% +/- . The percentage of population in Snohomish County living below the federal poverty level is 8.8%<sup>5</sup>. Camano Island has approximately 6% of its population living below the poverty level<sup>6</sup>.

The district provides special services to over 700 students of all grade levels. These services include vision, speech and occupational/physical therapy, as well as behavior and assist services. Many of our students benefit from more than one category of service. We typically have between 170 to 210 students per school year who qualify for McKinney Vento. The McKinney Vento Act directs school districts to provide educational services to students experiencing housing insecurity. This support comes in the form of transportation to and from school and student advocacy.

1 <https://washingtonstatereportcard.ospi.k12.wa.us/ReportCard/ViewSchoolOrDistrict/100250>

2 U.S. Census, 2019

3 [census.gov/quickfacts/fact/table/islandcountywashington,WA/PST045219](https://www.census.gov/quickfacts/fact/table/islandcountywashington,WA/PST045219)

4 [data.census.gov/cedsci/table?q=Camano%20Island,%20WA&tid=ACSDP5Y2019.DP05](https://data.census.gov/cedsci/table?q=Camano%20Island,%20WA&tid=ACSDP5Y2019.DP05)

5 Snohomish County Low Income Community Needs Assessment 2019

6 <https://data.census.gov/cedsci/table?q=Camano%20Island,%20WA&tid=ACSST5Y2019.S1701>

DRAFT

DRAFT

DRAFT

# *Programs and Standards*

DRAFT

DRAFT

DRAFT

DRAFT

### **Strategic Planning**

The Stanwood-Camano School District is currently engaged in a comprehensive Strategic Planning process. The strategic plan acts as a road map for our school system. Its primary aim is to align all stakeholders on a shared vision, common goals, and unified direction for our district’s educational efforts. This strategic plan expands upon and refines the district’s existing Collective Commitment, which describes goals and outcomes around four specific target areas: Strong Instructional Core; Safety; Alignment of Student Learning Resources; and Family/Community Engagement. The action plans and outcomes defined in our Collective Commitment are reflected, and expanded upon, in our Strategic Planning effort.

### **Programs**

A multitude of programs are offered to students in our district. Examples of these are:

- Special education pre-school
- Special education
- ESL
- Chapter I/LAP
- Career and Technical Education (CTE)
- Music
- Alternative education
- Gifted program

DRAFT

- Athletics
- Online learning
- Substance abuse program
- Transitions
- Open doors

These programs can be found at various schools. Some can be accommodated in a typical classroom, while others require specialized spaces and furnishings that are unique to the building and the goals of the program. Athletics provides after school sports to over 700 students each school year, many of which require exterior site and storage provisions. CTE classes attract 1,500 students grades 6 through 12, yearly. These are examples of important offerings in the district that require additional acreage or specialized spaces.

## Educational Program Standards

### **Elementary School**

- Class size for grades K-3 should not exceed 24 students.
- Class size for grades 4-5 should not exceed 28 students.
- Special Education for students may be provided in a self-contained classroom.
- All students will be provided music instruction in a separate classroom.
- Students may have a scheduled time in a computer lab.
- Optimum design capacity for new elementary schools is 500 students. However, actual capacity of individual schools may vary depending on the education programs offered.

### **Middle and High School**

- Class size for grades 6 should not exceed 28 students.
- Class size for grades 7-12 should not exceed 30 students.
- As a result of scheduling conflicts for student programs, the need for specialized rooms, and the need for teacher planning space it is not possible to achieve 100% utilization of all regular teaching stations throughout the day. Therefore, classroom capacity should be adjusted using a utilization

factor of 85% to reflect the use of one-period per day for teacher planning.

- Special education for students will be provided in mainstreamed settings as well as self-contained classrooms.
- Identified students will also be provided other non-traditional educational opportunities in classrooms designated as: Resource Rooms (i.e. computer labs, study rooms); Special Education Classrooms.
- Program specific classrooms will be provided (i.e. music, drama, art, home economics/culinary arts, physical education).
- Optimum design capacity for new middle schools is 675 students. However, actual capacity of individual schools may vary depending on the educational programs offered.
- Optimum design capacity for new high schools is 1,200.

### **Minimum Educational Service Standards**

The Stanwood-Camano School District will evaluate the number of housed student levels based on the District as a whole system and not on a school-by-school or site-by-site basis. This may result in portable classrooms being used as interim housing, attendance boundary changes or other program changes to balance housed student numbers across the system as a whole.

The Stanwood-Camano School District has set minimum educational service standards based on several criteria. Exceeding these minimum standards will trigger significant changes in program delivery. If there are 25 more students in a majority of K-5 classrooms, 29 or more students in a majority of 6th grade classrooms, or 32 or more students in a majority of 7-12 classrooms, the minimum standards have not been met.

It should be noted that the minimum educational standard is just that, a minimum, and not the desired or accepted operating standard.

DRAFT

DRAFT



DRAFT

DRAFT

DRAFT

# *Facilities Inventory*

DRAFT

DRAFT

DRAFT



CEDARHOME ELEMENTARY

Address:	27911 68th Ave. NW	Portables:	7 Single
Year Built:	1997	Classrooms: (incl. portables)	27
Property Acreage:	18.7	Design Capacity:	500
Building S.F.:	48,967 Gross	2021-2022 Enrollment:	553

Cedarhome Elementary School program, site and facility narrative.

DRAFT

DRAFT



**ELGER BAY ELEMENTARY (CAMANO ISLAND)**

Address:	1812 Elger Bay Rd	Portables:	2 Single
Year Built:	2000	Classrooms: (incl. portables)	24
Property Acreage:	20	Design Capacity:	500
Building S.F.:	49,693 Gross	2021-2022 Enrollment:	339

Elger Bay Elementary School program, site and facility narrative.

DRAFT

DRAFT



**STANWOOD ELEMENTARY**

Address:	10227 273rd Pl. NW	Portables:	4 Single
Year Built:	1955	Classrooms: (incl. portables)	34
Property Acreage:	12	Design Capacity:	500
Building S.F.:	53,570 Gross	2021-2022 Enrollment:	426

Stanwood Elementary School program, site and facility narrative.



**TWIN CITY ELEMENTARY**

Address:	26211 72nd Ave. NW	Portables:	3 Single 1 Double
Year Built:	1988	Classrooms: (incl. portables)	25
Property Acreage:	11	Design Capacity:	450
Building S.F.:	43,963 Gross	2021-2022 Enrollment:	346

Twin City Elementary School program, site and facility narrative.



**UTSALADY ELEMENTARY (CAMANO ISLAND)**

Address:	608 Arrowhead Rd	Portables:	0
Year Built:	1999	Classrooms: (incl. portables)	25
Property Acreage:	19	Design Capacity:	500
Building S.F.:	48,967 Gross	2021-2022 Enrollment:	282

Utsalady Elementary School program, site and facility narrative.



DRAFT

**PORT SUSAN MIDDLE SCHOOL**

Address:	7506 267th St. NW	Portables:	5 (see narrative)
Year Built:	1999	Classrooms: (incl. portables)	34
Property Acreage:	28	Design Capacity:	600
Building S.F.:	77,900	2021-2022 Enrollment:	489

DRAFT



**STANWOOD MIDDLE SCHOOL**

Address:	9405 271st St NW	Portables:	(in use?)
Year Built: Renovated:	1934, 1957 1992	Classrooms: (incl. portables)	33
Property Acreage:	16.4	Design Capacity:	600
Building S.F.:	94,431	2021-2022 Enrollment:	479

High School and Alternative Program Facilities

DRAFT

**STANWOOD HIGH SCHOOL**

Address:	7200 272nd St NW	Portables:	0
Year Built:	2020	Classrooms:	60
Property Acreage:	50.3	Design Capacity:	1500
Building S.F.:	255,000	2021-2022 Enrollment:	1275

DRAFT

**CHURCH CREEK CAMPUS**

- Lincoln Hill High School
- Lincoln Academy
- Saratoga

Address:	7600 272nd Ave NW	Portables:	0
Year Built:	2020	Classrooms:	12
Property Acreage:	12	Design Capacity:	250 (see narrative)
Building S.F.:	43,972	2021-2022 Enrollment:	130 (LHHS) 15 (LA ) 254 (Saratoga)



## STADIUM AND FIELDS

The stadium property football field upgraded to turf as part of the Stanwood High School project, funded by the 2017 Bond. New turf fields were added to replace the grass fields relocated as part of the campus reconfiguration. The new fields are: the multi-purpose field, located on 272nd St. SW in front of the new high school; and one each fastpitch and baseball fields, located between SHS and CCC. Additional improvements to the athletics properties as part of the bond work included an addition and renovation of the existing field house adjacent to the football field; and the addition of toilet rooms and upgraded locker room at the batting cage adjacent to the ballfields. The grass practice ballfields were left as is and are still in use.

Port Susan Middle School has a football/soccer field with a paved, unstriped walking track, and an informal field with a baseball diamond. During the wet season, this field becomes unsuitable for PE or athletics.

Stanwood Middle School has a grass football/soccer field with a paved, striped running track, and an informal field with a baseball diamond.

All elementary schools have new structured play areas and informal playfields. Twin City has two ballfields, Cedarhome one, Stanwood Elementary one, Utsalady has a ballfield and informal soccer field, Elger Bay has informal playfields with one ballfield.



MAINTENANCE AND TECHNOLOGY

Address:	7401 272nd Ave NW	Building S.F.: IT Maintenance Storage Portable	8,200 7,414 900
Year Built: IT Maintenance	2020 2020 (Renovation)	Property Acreage:	(included in SHS 50.3)



TRANSPORTATION

Address:	9001 272nd St NW	Building S.F.:	13,680
Year Built:	2002	Property Acreage:	7

DRAFT

DRAFT



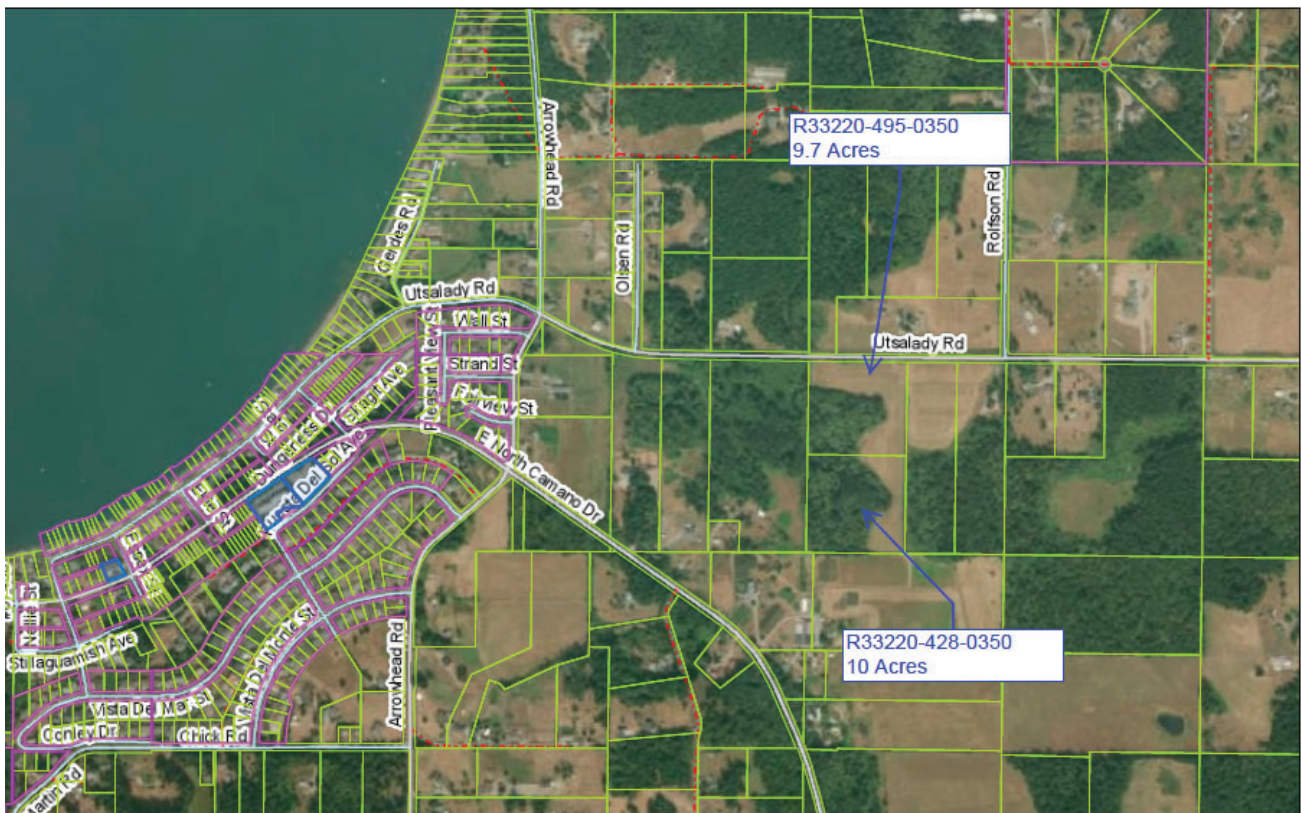
DISTRICT OFFICE

Address:	26920 Pioneer Hwy	Building S.F.:	8,880
Year Built:	2005 (Renovation)	Property Acreage:	0.9

The District Office houses the superintendent, district administrators and support staff. The board room is located on the lower floor and is utilized for board meetings, district training, and other large group gatherings.

Land

CAMANO ISLAND



DRAFT



DRAFT



DRAFT

DRAFT

DRAFT

# *Student Enrollment Trends and Projections*

DRAFT

DRAFT

DRAFT

DRAFT

**Kendrick pages start here**

DRAFT

DRAFT

DRAFT

DRAFT

DRAFT

DRAFT

DRAFT

DRAFT

# *Capital Facilities Plan*

DRAFT



DRAFT

DRAFT

DRAFT

**Planned Improvements**

Costs

DRAFT

DRAFT

DRAFT

Bond

Levy

DRAFT

DRAFT

DRAFT

DRAFT

DRAFT

# *Summary*

DRAFT

DRAFT

DRAFT

DRAFT

DRAFT



DRAFT

DRAFT

DRAFT

# *Appendices*

DRAFT